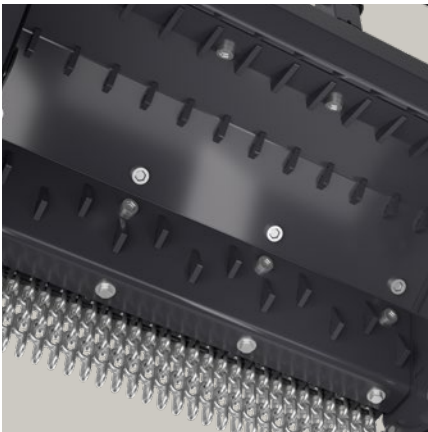


STRONG. VERSATILE. ALL NEW.

M450e-1100 – THE NEW FORESTRY MULCHER FOR MID-SIZE EXCAVATORS

The brand-new M450e-1100 excavator head is a completely new designed forestry mulcher in the class of 15 – 21 t excavators.

It is equipped with a powerful 115 cc hydraulic motor to cover the flow range of the mid-size excavator range and to achieve the best performance for perfect mulching results.



HOUSING

Optimized to make it strong and robust for the forestry application and to allow good access to all the service points. It is covered with bolted liners with counter blades which protect the housing and ensure additional shredding of the material while passing the housing.



PROTECTION FLAP

The optional flap is equipped with counter blades for additional shredding and perfect mulching results. It provides extra protection while mulching next to roads or in residential zones.



THUMB BRACKET

The thumb bracket is available as an option. It enables the easy positioning of the material to be mulched.

Pinotti

STRONG AND VERSATILE

The mulcher can be used universally and is ideal for mulching trees and brush.



MAIN TECHNICAL BENEFITS

- Powerful and high efficiency 115 cc HD- variable displacement motors
- NEW: Power transfer with poly chain – the poly chain system prevents slippage and is low-maintenance
- Hydraulic connections protected inside the housing
- NEW: optional fixed thumb bracket available
- Available with or without flap, electronically or hydraulically controlled (optional)
- Robust design of the push bar for optimum mulching result

TECHNICAL DATA M450e-1100

Working width	43.3 in (1,100 mm)
Total width	63.1 in (1,680 mm)
Weight*	1,896 – 2,205 lbs (860 – 1,000 kg)
Rotor diameter	17.7 in (450 mm)
Volume flow	32 – 58 gpm (120 – 220 l/min)
Tools	24x BCS or 28x UPTs
Height (without push bar)	35.0 in (890 mm)
Height (with push bar)	37.4 in (950 mm)
Depth (without flap)	30.4 in (773 mm)
Depth (with flap)	31.6 in (802 mm)
Depth (with flap, with push bar)	36.7 in (932 mm)

* Weight depending on the configuration of the machine

PRINOTH GmbH

Im Branden 15
88634 Herdwangen
GERMANY
Tel. +49 7557 92120
prinoth.germany@prinoth.com

PRINOTH AG

Brennerstraße 34
39049 Sterzing
ITALY
Tel. +39 0472 72 26 22
prinoth@prinoth.com

PRINOTH Ltd.

1001 J.-A. Bombardier Street
Granby Qc J2J 1E9
CANADA
Tel. +1 450 776 3600
sales.na@prinoth.com

Locate your nearest sales and service points at [prinoth.com](https://www.prinoth.com)

Prinoth[®]